



# Short-Term Group Manual

Community Development in Partnership  
with Local Leaders and in Solidarity with the  
People of La Limonada in Guatemala City

# From Our Executive Director



Dear Group Leader,

Whether you've been on a trip with us in the past or this is your first time serving with us we are grateful that you and those in your group have chosen to spend a week of your lives serving the people of La Limonada. We're honored for the opportunity to introduce you to our friends and to facilitate what we believe will be a significant time in your lives.

Your week will be filled with encounters with dozens of children who will be so happy to see you and families who will welcome you into their homes. You will meet with the directors of each of our programs and the people they serve. You will see tremendous needs and you will spend time with people who have given their lives to meeting those needs.

You will quickly see that La Limonada is a place filled with brokenness as a result of poverty, but you will also see it as a place filled with so much hope.

We ask you to approach your time with us from a posture of humility - seeking to take in as much as you can. We ask you to listen to the stories of people's lives and enter into their stories. We ask you to look at the brokenness and the hope. Don't look away from the pain you will experience - look at it longer than you are comfortable with. And we ask you to embrace the people you meet and allow them to become a part of your life story.

Thank you for serving with us. We pray that God will use this time to tattoo His love for the world on your heart.

Grace and peace,  
**Bill Cummings**

# Introduction



Our work in La Limonada is founded on our relationships with the people who live there. It is our desire that those relationships are extended to include you as well. While your group may focus on a specific project during your time in La Limonada, we strongly encourage you and your group to engage in the community as a learner.

We believe we learn more from the people who live and serve in La Limonada than we could ever teach them. Therefore, our desire is for short-term trip participants will approach their time in Guatemala from a perspective of “learning from and participating with” the people of the community.

A quote from one of our favorite books says, “We believe that God’s voice, like the voice of Abel — whose very names means *vapor* or *breath* — is speaking through the bloodstained ground of the people and places where suffering and death is a way of life.

In fact, it is our hunch that God’s voice is clearest and most strikingly Godlike in these places. In this sense, theology from below is to the Church as research and development is to business - when we learn to hear the voice of God in the vaporous holes of the world, we learn how to make sense of His voice, and perhaps even to occupy one or two of the holes we stumble into” (Kris Rocke & Joel Van Dyke, *Geography of Grace*).

Your time in the La Limonada community will be just as much, if not more, about *being* and *learning* as it is about *doing*. As we schedule your time in the community, we will create as much time as possible for your group members to interact with the people who live and serve there - capturing their stories and learning as they share their lives. We fully believe all people are created in God’s image, and we want to encourage group participants to capture this perspective as they spend time in the community we serve.

# Introduction (continued)



We believe that God's hand is in this community, writing its story.

“It is our distinct privilege to be in a community with people in hard places who live as God's enfleshed poetry” - *Geography of Grace*

It is important to remember that God is not a God from our culture or our own comfort zone... but a God that is boundless, not American or Guatemalan... but a God that makes all places holy. “Traditionally, the Church approaches mission with the idea that there are many unconverted people out there who need the good news of Jesus Christ; therefore, it is our responsibility to go to them for their benefit. This might be true, but what else might be happening as we go out there? We discover Jesus.” - *Geography of Grace*

We invite you to join God's story in La Limonada. We invite you to allow yourself and your group members to be interwoven in the beautiful brokenness that exists in the lives of the people you meet. We invite you to tuck away your preconceived perceptions (that all of us have) and to open up your mind, heart, and soul to what God will show you.

We invite you to roll up your sleeves and to get your hands dirty — to embrace the messiness that accompanies humanity — remembering that, “My grace is sufficient for you, for my power is made perfect in weakness” (2 Corinthians 12:9).

Finally, we invite you to fall in love with these people, their lives, and their stories. For when you do, we believe you will be transformed.”

# Guatemala



Guatemala is a country in Central America, bordered by Mexico, Belize, Honduras and El Salvador. It has an estimated population of 13.2 million. Its capital city is Guatemala City, the largest city in Central America, with a population estimated of 2.3 million.

About 40% of the population is Ladino, also called Mestizo (mixed Amer-Indian and Spanish). Whites (primarily of Spanish descent, but also Italian, German, British and Scandinavian) make up about 16% of the population. Amer-Indian populations include the K'iche' 9.1%, Kaqchikel 8.4%, Mam 7.9%, and Q'eqchi 6.3%. 8.6% of the population is "other Mayan", 0.2% is indigenous non-Mayan, making the indigenous community in Guatemala about 40% of the population.

In 1996, a thirty-six yearlong civil war ended in Guatemala. Throughout the years of the civil war, most of the violence took place in rural areas of the country. As a result of the violence, many people fled to the city to escape, and with nowhere to live, many staked claim to land in such places as the ravine that is known as La Limonada. Although the civil war has ended, the violence has not. In fact, there are currently more violent deaths on a daily basis in Guatemala than during the time of the civil war.



# La Limonada



La Limonada (translated *The Lemonade*) is an urban slum community of approximately 60,000 people in the heart of Guatemala City. The community is built into a ravine that is approximately one mile long and half a mile wide. Within La Limonada there are ten neighborhoods (or “barrios”) and each barrio has its own forces of protection - gangs that rule the territory.

It is common for residents of one barrio not to cross over to another barrio because gangs mark their territories and prevent them from doing so. The community is notorious for violence, drugs, lack of education, illiteracy, sexual exploitation and murder. As a result of the culture of violence and the cycle of poverty, the people of the community have been marginalized and dehumanized by the people of Guatemala City. Merely having a La Limonada address is enough to prevent a person from finding a job elsewhere in the city.”



# About Our Work



In 1994, Tita Evertsz, a local Guatemalan, began volunteering her time by serving in La Limonada, even after her church leaders encouraged her not to go there. Her own past included drugs and abusive relationships - so she could relate to the struggles the people face on a daily basis. When she began visiting the community she would push her children in a stroller while carrying a pot of rice and beans to share with people in the community. Years of serving the community and witnessing a cycle of poverty, drug abuse, violence and death, confirmed in Tita's heart that she had to do something that would break the cycle.

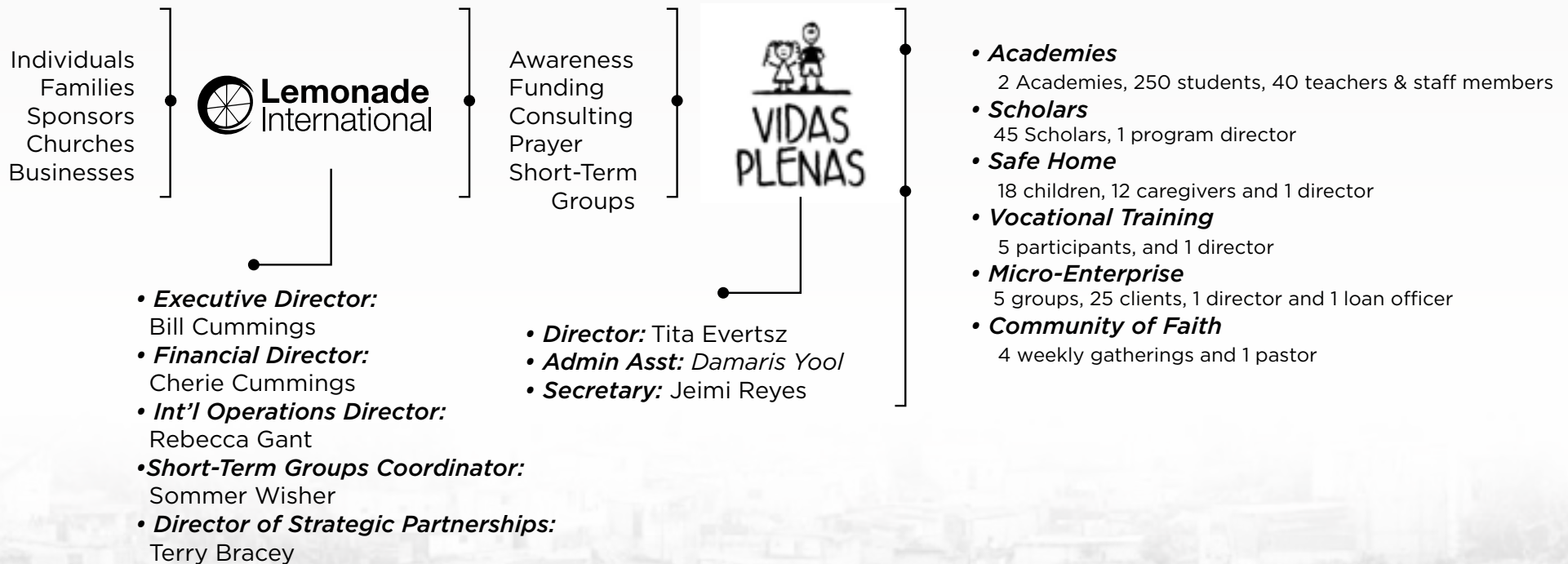
Tita established Vidas Plenas (translated *Fulfilled Lives*) in 2001 as a Guatemalan NGO and the first academy was established where children are loved, valued, fed, clothed, taught proper hygiene and provided with scholarships to attend formal schools in

Guatemala City.

In 2004, the first group from the US, including the founders of Lemonade International, served with Tita in La Limonada, and helped raise funds to build an addition on the school building. A lifelong friendship emerged from this trip, which led Bill and Cherie Cummings, Leah Craver and Donnie Long to establish Lemonade International in 2008 as a federally recognized, 501(c)(3) non-profit organization incorporated in the state of North Carolina.

Our work now includes holistic community development programs through which we are committed to working in solidarity with the people of La Limonada to empower sustainable transformation within the community. Future plans include expanding into other barrios within La Limonada, as well as establishing a vocational training center and a walk-in medical clinic.

# Lemonade International and Vidas Plenas





# Expectations of Group Leader



Your role as a group leader is key to ensuring a great experience for your group in Guatemala. We have carefully considered your role and we ask that you make your strongest effort to commit to the following:

- Be the primary contact person for us to communicate with concerning trip details.
- Represent your group as the liaison for Lemonade International staff in the US and in Guatemala.
- Organize pre and post-trip meetings for your group.
- Submit all forms (consent forms can be found in the Appendix) and fees to Lemonade International by the designated deadlines prior to trip.
- Communicate with one designated contact person in the US so they are aware of your group's safe arrival.
- Lead your group in brief discussions (or delegate to other group members) each night of your trip in Guatemala (see Appendix for Discussion Guide).
- Commit to reading the book "Geography of Grace" prior to your trip (will be sent to you following receipt of your Group Application).
- Complete the post-trip survey and provide sufficient feedback regarding your group's experience in Guatemala to Lemonade International's Short-Term Groups Coordinator.

# Commitment of Lemonade International Hosts in Guatemala



We are fortunate to have full-time staff members in Guatemala who understand life and culture in Guatemala. Our team in Guatemala is there to serve you and will commit to the following:

- Providing clear communication regarding the agenda for the week and any changes that may arise in the plans throughout the week.
- Conducting an orientation for your group the first night of your stay at the Lemonade House.
- Ensuring that the Lemonade House is prepared for your arrival (including food, sleeping arrangements, bedding, towels, etc.)

- Making preparations for any service projects your group may be involved with.
- Providing transportation, interpreters, and everything necessary to equip you for effective service throughout your time in Guatemala.

**Note:** Our team members in Guatemala have flexible work hours, but it is vital for them to have personal time and time off. All efforts will be made to serve your group when your hosts are unavailable.

# Timeline: Six months prior to departure



- Communication will be initiated by Lemonade International's Short Term Groups Coordinator to set up group agenda, group meetings, etc.
- Promote trip to friends, family, church, etc. (at your request a half-sheet flyer design including your scheduled dates will be provided to you).
- Compile a preliminary list of people you would like to join you on the trip and personally invite them.
- Set up one to two fundraisers to help fund your trip. Some ideas for successful fundraisers include serving Guatemalan-style dinner and charging \$10 per person, selling baked goods, hosting a donation-based car wash, partnering with a local restaurant and receiving a percentage of sales on a specific date, yard sales, setting up a Lemonade Stand. The ideas are endless!

- Begin reading "Geography of Grace"
- Begin researching flights to Guatemala City, Guatemala. Purchase tickets as soon as you find a good deal and your group is finalized.

**Note:** If individuals will be purchasing their own tickets please be sure all tickets are for the same dates and departure/arrival times and are scheduled to arrive in and depart Guatemala as close to noon as possible.





## Timeline: Three months prior to departure

- Lemonade International's Short Term Groups Coordinator will schedule the first Skype or phone meeting.
- Confirm your group's service project(s) (Short Term Groups Coordinator will work on this with you).
- Schedule three meetings for your group prior to departure:

### **First Meeting:**

This meeting needs to be scheduled two months prior to your trip and will include a Skype meeting with our Short Term Groups Coordinator. All funds and consent forms are due to Lemonade International six weeks prior to your trip. This meeting is a great time to collect all forms and funds from group members.

### **Second Meeting:**

This meeting should be scheduled one month prior to your trip. At this point you should assign roles for group members and collect all supplies for your service project(s). This is also the deadline for submitting all funds and consent forms.

### **Third Meeting:**

This meeting should be scheduled 1-2 weeks prior to your trip. At this meeting we encourage you and your group members to pray together and prepare their hearts for the upcoming trip and to ask any final questions they may have.

### **ONE MONTH PRIOR TO DEPARTURE:**

- Confirm flights.
- Host in Guatemala will schedule Skype meeting to meet the group leader and go over details of the trip.

# While in Guatemala



- All group members must always be with someone from the staff of Lemonade International or Vidas Plenas during your time in La Limonada.
- Your group will experience difficult stories and situations during your time in La Limonada. Please be sensitive about when and where you share your reactions to these experiences.
- If your group members have gifts for the children (whether the gifts are from a group member or from someone who isn't part of the group) we ask that you inform your Lemonade International host to make arrangements for the gifts to be given to the children.
- Please refrain from giving any money directly to the people of La Limonada or anyone on the streets of Guatemala City without consulting your group host.
- Please do not make any promises to people from the La Limonada community or our team on the ground in Guatemala about what you plan on doing when you return home, when you will be coming back to the country, or what you plan on doing to help them. Even if you have the best of intentions it is important not to make promises.

## Group Size

- Groups should be limited to a total of 12 members (including the group leader)

# Food & Lodging



- The Lemonade House can accommodate up to 12 people per group (including the group leader)
- We ask that you remain respectful of the space in the Lemonade House., it is also the home of some of the Lemonade International and/or Vidas Plenas staff members.
- All lights in the Lemonade House are to be turned off when no one is in the room.
- Please refrain from leaving water running while brushing teeth, doing dishes, etc.
- In most cases it is not safe to drink the tap water in Guatemala. Filtered water will be provided at the Lemonade House.
- Each day (Monday-Saturday) you will eat breakfast at the Lemonade House (cereals, eggs, pancakes, oatmeal, granola bars, fruit, coffee, etc).
- Each day (Monday-Thursday) you will prepare a sack lunch (sandwich, chips, apple, cookies, water).
- Each day, (Monday-Friday) you will have an authentic Guatemalan meal prepared for you. Please note, you have the option to prepare a meal for the children at the Safe Home one night during your stay. Your meal that night will be the same as the meal you prepare for the children.
- Your time in Guatemala will consist of one travel day (usually on Friday) to experience Guatemalan culture and to visit a market where souvenirs can be purchased. Each group member should plan on covering the cost of lunch, snacks and souvenirs on the travel day.
- Please notify the Lemonade International Host of any food allergies or special dietary needs for any members of your group.

# What to Pack & What Not to Pack



It is helpful to limit all of your personal belongings to one piece of luggage that you will check and one carry-on (a backpack is recommended to have with you throughout your time in the country).

If your group would like to give gifts or supplies to the teachers or children, please make arrangements to check a second piece of luggage for that purpose (it is important to check with your airline to determine the cost of additional baggage).

\* See Appendix for a detailed list of items to bring and not to bring



# Transportation



## Flights

Booking your flights to and from Guatemala is your responsibility. Please keep in mind that your arrival flights (Sunday) and departure flights (Saturday) should be scheduled as close to noon as possible.

## Guatemala Airport Information

Your group will arrive at La Aurora International Airport in Guatemala City. You will be picked up by a Lemonade International representative and will be taken either to La Limonada or the Lemonade House, depending on your schedule. The drive to either location is approximately 20-30 minutes.

Please be prepared to exchange money inside the airport terminal. There are two locations where currency can be exchanged. This will be your only

opportunity to exchange US dollars to Guatemalan Quetzals. Whatever money you don't spend by the end of your trip you can exchange back to US dollars at the airport when you depart.

## Travel in Guatemala

- Transportation is provided throughout your trip including the pre-approved tourist destination.
- Transportation is provided to and from one pre-determined destination on one day of your stay in Guatemala in order to experience Guatemalan culture outside of La Limonada.
- A vehicle/driver will **not** be available to transport your group to destinations other than the airport, La Limonada and to one pre-approved tourist destination.



## Other Details



**Cell Phones:** A cell phone will be provided to the group leader upon arrival in Guatemala. Each group will be responsible for purchasing a calling card for the cell phone in order to have available minutes. Calling cards can be purchased for a very reasonable rate. Groups will be responsible for purchasing a replacement phone in Guatemala if the one they are provided with is lost. It is important that each person in your group communicates with family members that their cell phones will not work while in Guatemala.

**Contacting Family Members and Friends When in Guatemala:** We ask that each group establish a primary contact person in the US who will contact family members of each group member. The group cell phone can be used for group members to make contact with the primary contact person in the US. Internet access is available at the Lemonade House so you will be able to communicate with family and friends as long

as the internet service is working (it can be sporadic at times in Guatemala).

**Computer Usage:** It is up to you as the group leader to determine if your individual group members will be permitted to bring computers with them. Internet access is available at the Lemonade House and it is advisable to bring a 3-prong to 2-prong adapter with you for plugging in laptops. Lemonade International is not responsible for any lost or stolen personal items while groups are in Guatemala.

**Required/Suggested Immunizations & Health-Related Concerns:** No immunizations are required for travel to Guatemala. We strongly encourage each individual in the group to consult a family physician for any suggested immunizations. Each person should be in good physical condition at the time of the trip. Walking long distances on uneven terrain and up and down hills is required.

# Other Details



**Insurance:** Each group member is strongly encouraged to research their current medical insurance policy to verify there is adequate coverage for travel and medical emergency coverage outside of the US. Those who do not have adequate coverage (or any coverage) are strongly encouraged to purchase travel insurance that will provide coverage while in Guatemala. [HTH Travel](#) provides excellent rates for out-of-country medical coverage.

**Security Suggestion:** You are encouraged to register the members of your group with the US Embassy in Guatemala. Follow instructions on the US State Department website to complete the group registration. Registration allows you to record information about your upcoming trip which the US Department of State will use to assist you in case of an emergency or natural disaster.

**Weather:** The following website provides a helpful resource for expected weather in Guatemala City at various times of the year (link):

## Guatemala City Weather



# Trip Cost (per person)



## **Application Fee:**

(Non-refundable, 1 per group) \$100

## **Airline Ticket:**

Between \$450-\$800

## **Food & Lodging:**

\$35 per night

## **Administrative Fee:**

\$300

## **Program Support:**

\$300

## **Personal Spending Money:**

\$100 (Suggested)

**\*Food & Lodging:** This includes 3 meals a day with the exception of any food purchased outside of the Lemonade House.

**\*Administrative Fee:** This fee covers Lemonade International fees, facilitation of trip, transportation, and support for the team in Guatemala who will serve you during your stay.

**\*Ministry Support:** This fee helps to provide sustainable support for our six programs in La Limonada. If your group is scheduled to be part of any type of construction project, the cost of the project will be covered with funds from the ministry support fees submitted. If the cost of the project exceeds ministry support fees, your group will be asked to raise additional funds to cover the exceeded expenses needed for the project.

*\*All fees are due six weeks prior to your departure date. Checks should be made payable to Lemonade International and should be mailed to: PO Box 26204, Raleigh, NC 27611.*

*\*Please note that refunds will not be given after 30 days prior to the date of your group's scheduled arrival in*

# Our Challenge to You and Your Group



Statistics tell us that travelers from the US spent \$1.6 billion on short-term mission trips in 2006 alone. We do believe that there is often no substitute for personally visiting places in the world like La Limonada, but in many cases, those funds could have been invested more wisely by sending money to support the programs in various places in the world. With that in mind, we want to challenge you and your group to raise funds equivalent to the total amount you will be spending on your trip.

We ask each group member to include \$300 of support to the work in La Limonada in the cost of their trip; however, we would like to challenge your group to raise even more support than that. For example, if the trip costs \$1,000 per person, we will work with you to identify ways your group can raise \$1,000 per person above the cost of the trip to donate to a specific program or project where funds are needed most in La Limonada.

***“If you’ve come here to help me you are wasting your time, but if you have come because your liberation is bound up with mine then let us work together.”***

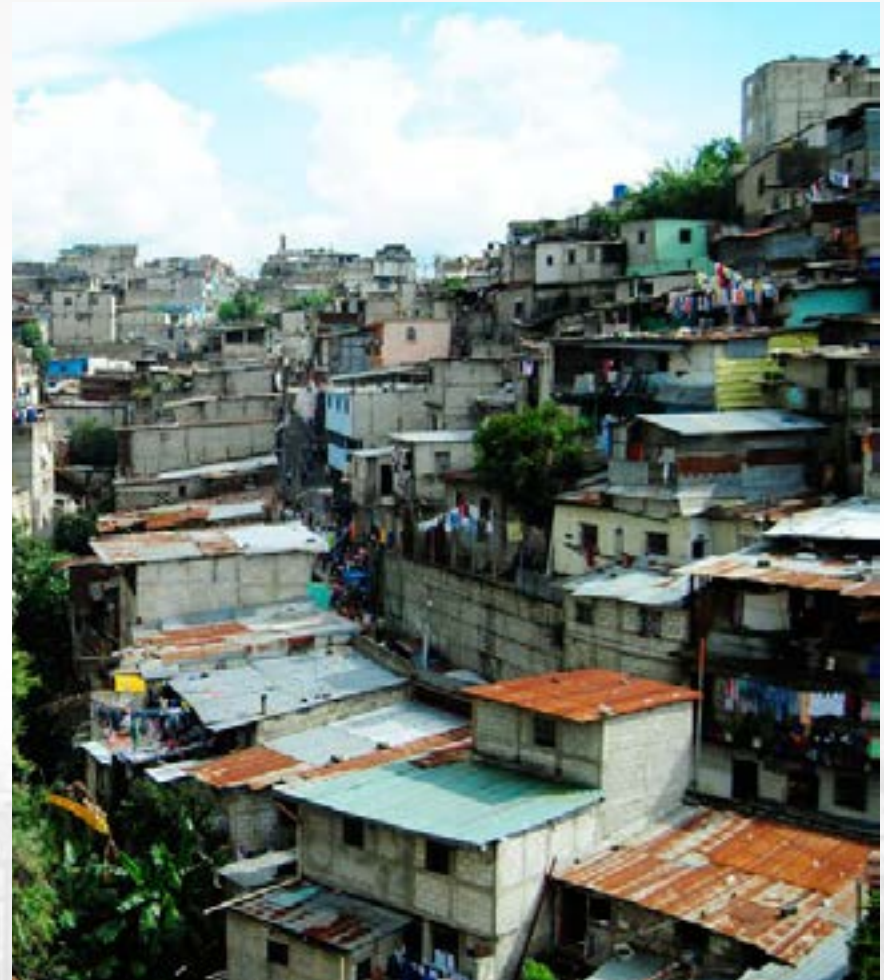
*- Aboriginal activists group,  
Queensland, Australia 1970s*



# Appendix



- Packing List
- Consent Forms
- Discussion Guide for Leaders



# Packing List



## Items to Bring:

- Toiletries
- Tennis Shoes to wear in La Limonada
- Weather appropriate pants or long skirts to wear in La Limonada (while in La Limonada women are not required to wear skirts)
- Shorts (can only be worn in the Lemonade House)
- Short-sleeve shirts to wear in La Limonada
- Sweatshirt - especially for mornings and evenings
- Outfits and shoes for outings other than La Limonada (1-2 outfits should work)
- Outfits to wear during the evenings at the Lemonade House
- Pajamas
- Sunscreen
- Bug spray
- Anti-diarrheal medicine
- 2 laundry bags (one for clothes worn in La Limonada and one for other clothing items)
- Water bottle (reusable - to be filled with filtered water daily)
- Antibacterial hand gel/wipes
- Camera (only one camera per group is allowed while visiting homes in La Limonada)
- Computer and power adaptor
- Bible
- Journal
- Writing utensils
- Thank you cards (for hosts, teachers, etc.)
- Original Passport
- Photocopy of Passport
- Supplies for service project predetermined by your group
- Spending Money (suggested \$100 per person)

# Packing List (continued)



## Items NOT to Bring:

- Towels (supplied for you)
- Pillow and bedding (supplied for you)
- Illegal Drugs
- Thin strapped tank tops
- Short shorts/skirts
- Expensive jewelry

# Forms



Each group member must complete the appropriate consent form and submit it to the group leader 45 days prior to departure. Click on the links below to access the printable forms.

**Parental Consent, Release & Hold Harmless Agreement for Minors** (for group members under 18-years-of age at the time the form is completed)

**Consent, Release & Hold Harmless Agreement for Adults**

**Source Cited:**

Kris Rocke and Joel Van Dyke. *Geography of Grace: Doing Theology From Below*. United States of America: Center of Transforming Mission, 2012.





# Discussion Guide



## **DAY ONE: Orientation**

*Facilitated by Lemonade International Host*

## **DAY TWO: Be Part of the Puzzle**

Ask each question and allow time for your group members to respond.

### **ASK:**

- Can you compare your experience at the academies today to your own experience at school?
- Growing up, what was your favorite part of school? What was your least favorite part of school?
- Share something that impacted you today at the academies?

**FOCUS:** Open the activity envelope and give each member of your group a puzzle piece and a marker/pen. Get out blank puzzle pieces and ask each group member to write their personal qualities on one side of the puzzle piece. Ask each person to write something positive about the community of La Limonada on the opposite side of the puzzle piece. Then ask the group members to assemble the puzzle.

## **SCRIPTURE READING:** 1 Corinthians 12

**SHARE:** Each of us is gifted with unique abilities and I believe that God is going to use our giftedness as individuals and as a group this week. I believe he will assemble us together much like the pieces of this puzzle. It is my hope that as we work together this week we will develop a deep sense of appreciation for each other's gifts and perspectives.

Written on the back of this puzzle are the positive things we saw today in La Limonada. If we fuse together our giftedness with what we see in La Limonada, this week will have a huge impact on our lives. I want each of us to ask ourselves this week, "How can I be part of the bigger picture?" "How can the people here fit into the puzzle of my life?" "How can we, as a group, fit into the puzzle of their lives?" Let's close in prayer as we focus on these questions.

## **PRAY**



**SHARE:** Aren't children fascinating? From just a few months old they start watching you and begin mimicking what you do. They really are like sponges.

Look at the sponge in your hand. Each sponge piece has pores absorb water. Similarly, children are constantly absorbing everything that is happening around them. Let's keep this in mind as we look into the eyes of each child in La Limonada this week.

What have these children already absorbed in their short lives? What have we absorbed throughout our lives? If we are aware of the fact that we absorbed so much when we were children, perhaps we will be more sensitive to the needs of the children and teachers who have grown up in La Limonada. Let's ask God to pour out his love through us into the hearts of the children - so his love is what they absorb this week.

### **DAY THREE: *Soaking it Up***

#### **ASK:**

- What were some of the most memorable lessons from your time at the academies today?
- How have those experiences impacted you?
- Did a particular child make an impression on you? If so, who? And why?

**FOCUS:** Open the activity envelope and give each member of your group a small sponge piece.

**SCRIPTURE READING:** Matthew 7:12

**PRAY**



## **DAY FOUR: *Home is Where the Heart Is***

### **ASK:**

- What does “home” mean to you?
- Where do you feel most at home?
- How is a house different that a home?

**FOCUS:** Open the activity envelope and give each member of your group a small piece of paper and colored pencils. Each member will draw a house key and will write a short message to the Lemonade House. This picture will be given to the Lemonade International team and will be hung in the house after we are gone. It would be great for you to write a prayer, a special quote or words of encouragement.

**READING:** My Heart Your Home by Watermark (we recommend you search for the song online & play it for your group to listen to together)



### **CHORUS:**

*Come and make my heart Your home  
Come and be everything I am and all I know  
Search me through and through  
'Till my heart becomes a home for You*

### **CHORUS**

*A home for You, Lord  
A home for You, Lord  
Let everything I do open up  
A door for You to come through  
And that my heart would be a place  
Where You want to be...*

### **CHORUS**

*You are my portion, filling up everything  
You are the fortune  
That's causing my heart to sing  
That it's amazing...  
That You could make Yourself at home with me*

### **CHORUS**



**SHARE:** Our homes make us feel safe, secure, and happy. It's where we relax. I can't help but wonder if those living in La Limonada feel those same feelings about their homes. I wonder if it is nice to come home after a long day of work. I wonder if they ever can come home to a good meal, fun family time and a warm bed.

As the song said, our hearts have to be our home and the only way that we can feel those sentiments of "home" are by allowing God to come into our hearts. We all have areas of our lives that resemble the messy closets in our homes — disordered, dishevelled and in need of some attention. May we surrender those things to God this week, and may God do the same in the lives of the people of La limonada.

We don't know all the situations the people of La Limonada are facing, but let's ask God to make a home for Himself within the hearts of the people of this beautiful

### *Commitment Cards:*

Each card we were given has a list of opportunities for us to make a commitment to this community beyond our time here. Let's pray about how we can continue to support the beautiful work we have experienced this week. Please fill out your commitment cards and submit them to me by Saturday so I can give them to our host.

Tonight we are going to pray for the "homes" of each person in La Limonada and how we can invite their stories into our homes. May we take the memory of the people we've met, the kids we've hugged, the sights we have taken in, the smells we have encountered back home with us.

### **PRAY**



## DAY FIVE: *Solidarity*

### ASK:

- Have you ever felt a deep sense of connection to another person?
- Do you find it difficult to relate to those outside of your belief system?
- Did you find it hard to relate to those speaking a different language than you?

**FOCUS:** Place the communion elements on a table in the middle of the group.

**READING:** The definition of solidarity is “union or fellowship arising from common responsibilities and interests, as between members of a group or between classes, peoples, etc.”

**SHARE:** The Lemonade Int’l mission is “Community Development in Partnership with Local Leaders and in Solidarity with the People of La Limonada in Guatemala City.” They are in a “union” La Limonada and we have been invited to be a part of that union.

Communion is a reminder to us of God’s sacrifice of His Son and our union with Him. As we take communion, let’s spend some time in silence to reflect on our solidarity with Christ. *Allow for quality time to take communion together.*

As we close out our week, let’s resolve to maintain a sense of solidarity with this community. Let’s do so with our hearts, our prayers, our commitments and acts of love.

### PRAY